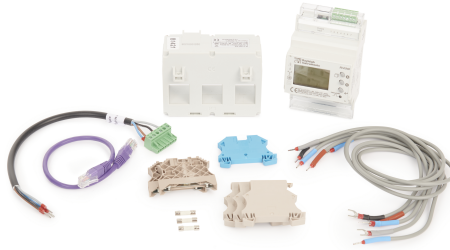




## Technical Specification

DDB-SCMIDMKIT - Single Channel MID Meter Kit



### General

**Box quantity:** 1

### Technical

**ABC indicator:** A

**Rated voltage:** 220-415V

**Frequency:** 50-60Hz

**Ambient operating temperature:**

-5 to 40°C (24hour average not exceeding 25°C)

**Width in number of modular spacings:** 4

**Nature of supply:** AC

**Mounting method:** DIN Rail

Kit Includes:

- Single channel DIN Rail mounted MID meter
- Din rail mounted fuseways and neutral terminal
- Interconnecting cables
- Current transformer